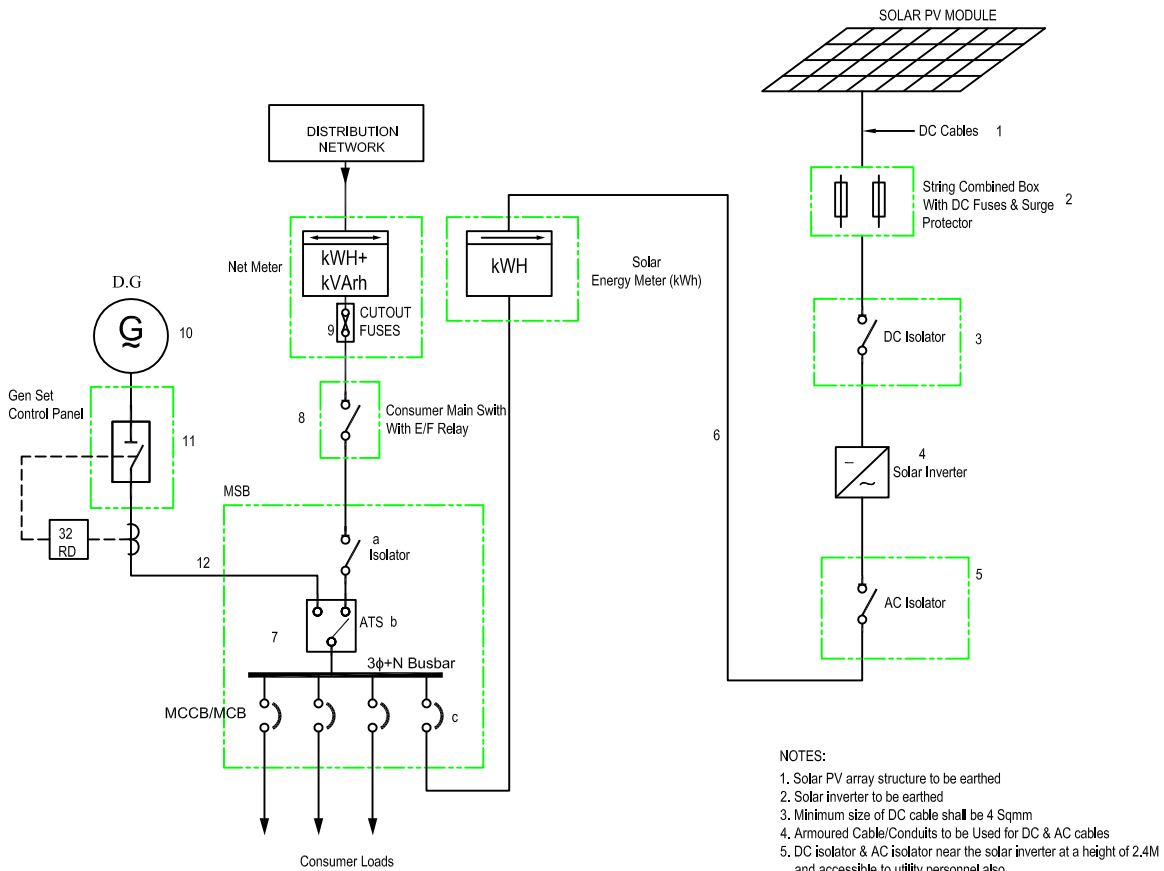


## Solar System 5kWp, 3 Phase with DG.



- NOTES:
1. Solar PV array structure to be earthed
  2. Solar inverter to be earthed
  3. Minimum size of DC cable shall be 4 Sqmm
  4. Armoured Cable/Conduits to be Used for DC & AC cables
  5. DC isolator & AC isolator near the solar inverter at a height of 2.4M and accessible to utility personnel also
  6. Net meter & solar meter at convenient location for reading
  7. DG set to have electronic governor & AVR
  8. Reverse power relay required for DG set

### GRID TIED SOLAR POWER SYSTEM WITH DG BACK UP

NOTES:

1. DC Cable: 2C, 4Sq. mm, XLPE / PVC Copper, UV protected.
2. DC Fuse: 15 Ampere
3. DC Isolator: 16 Ampere
4. Solar Invertor: 5 kVA
5. AC Isolator: 10 Ampere
6. AC Cable: 4C, 4Sq.mm, XLPE / PVC (Copper / Aluminium)
7. Main Switch Board (MSB): 16 Ampere Double Pole MCB DB (4Way)
  - a. Incomer MCB Isolator: 16 Ampere, 4 way
  - b. ATS: 16 Ampere
  - c. Outgoing MCB: 6/10 Ampere
8. Consumer Main Switch: 16 Ampere
9. Cut out fuse.
10. Generator: 415V, 50Hz, 3 Phase, 5 kVA
11. MCB: 16 Ampere
12. Cable: 4C, 4 Sq.mm., AYFY