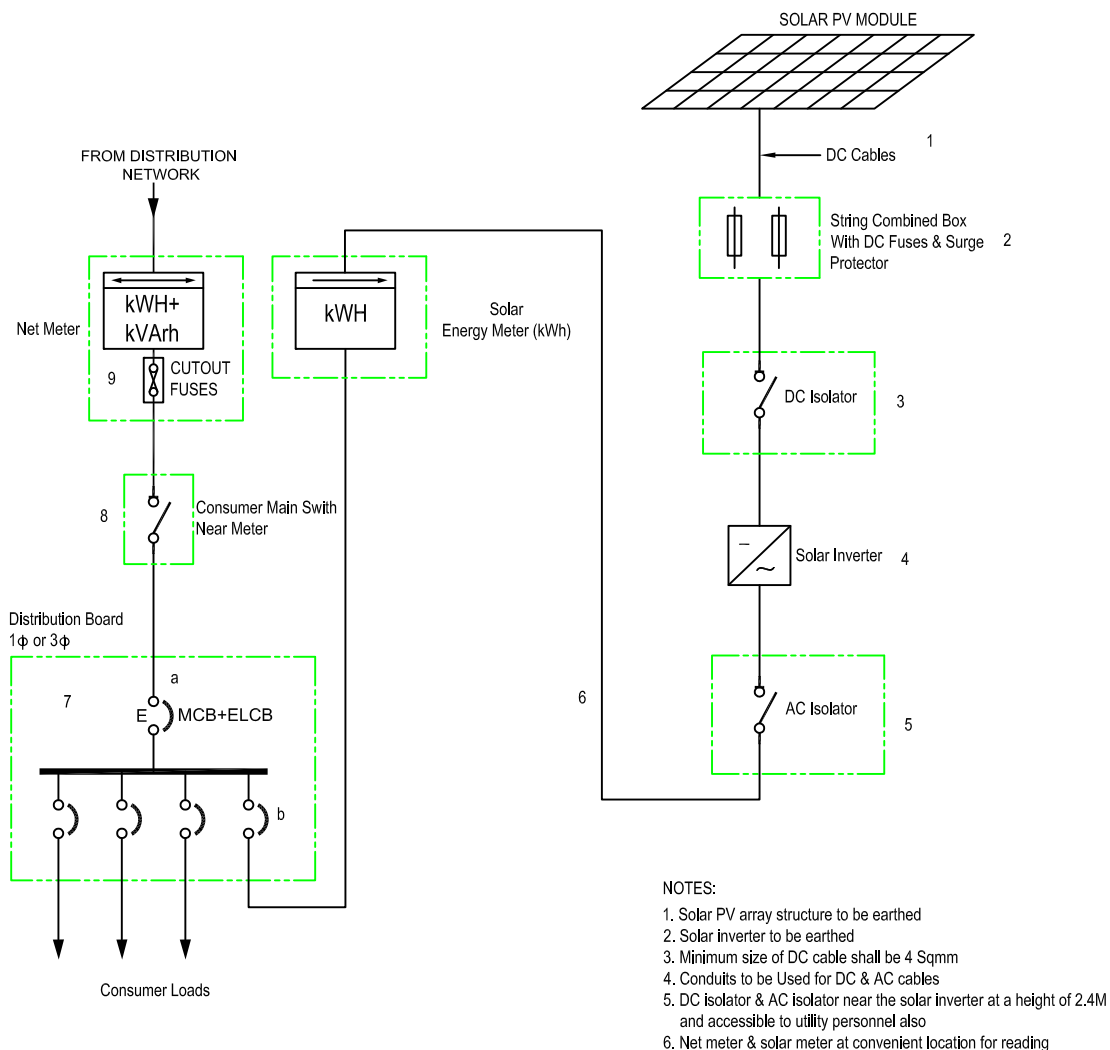


Solar System 50 kWp, 3 Phase.



GRID CONNECTED SOLAR PV SYSTEM

NOTES:

1. DC Cable: 2C, 50 Sq. mm, XLPE / 70 Sq.mm. PVC Copper, UV Protected.
2. DC Fuse: 125 Ampere
3. DC Isolator: 125 Ampere
4. Solar Inverter: 50 kVA
5. AC Isolator: 125 Ampere
6. AC Cable: 4C, 25/50Sq.mm, XLPE / PVC (Copper / Aluminium)
7. Distribution Board (DB): 100 Ampere TPN MCCB DB (4Way)
 - a. Incomer MCCB: 100 Ampere
 - b. Outgoing MCB: 6/10/16/25 Ampere
8. Consumer Main Switch: 100 Ampere
9. Cut out fuse.